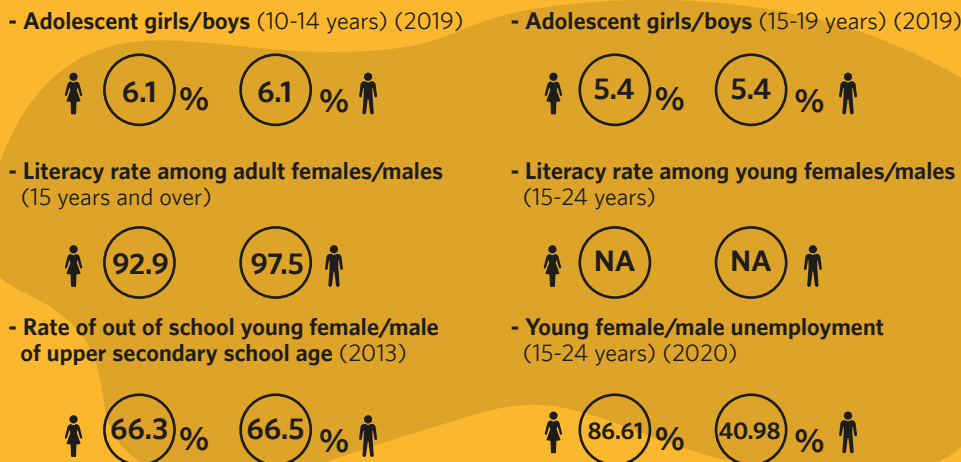




## SYRIAN ARAB REPUBLIC

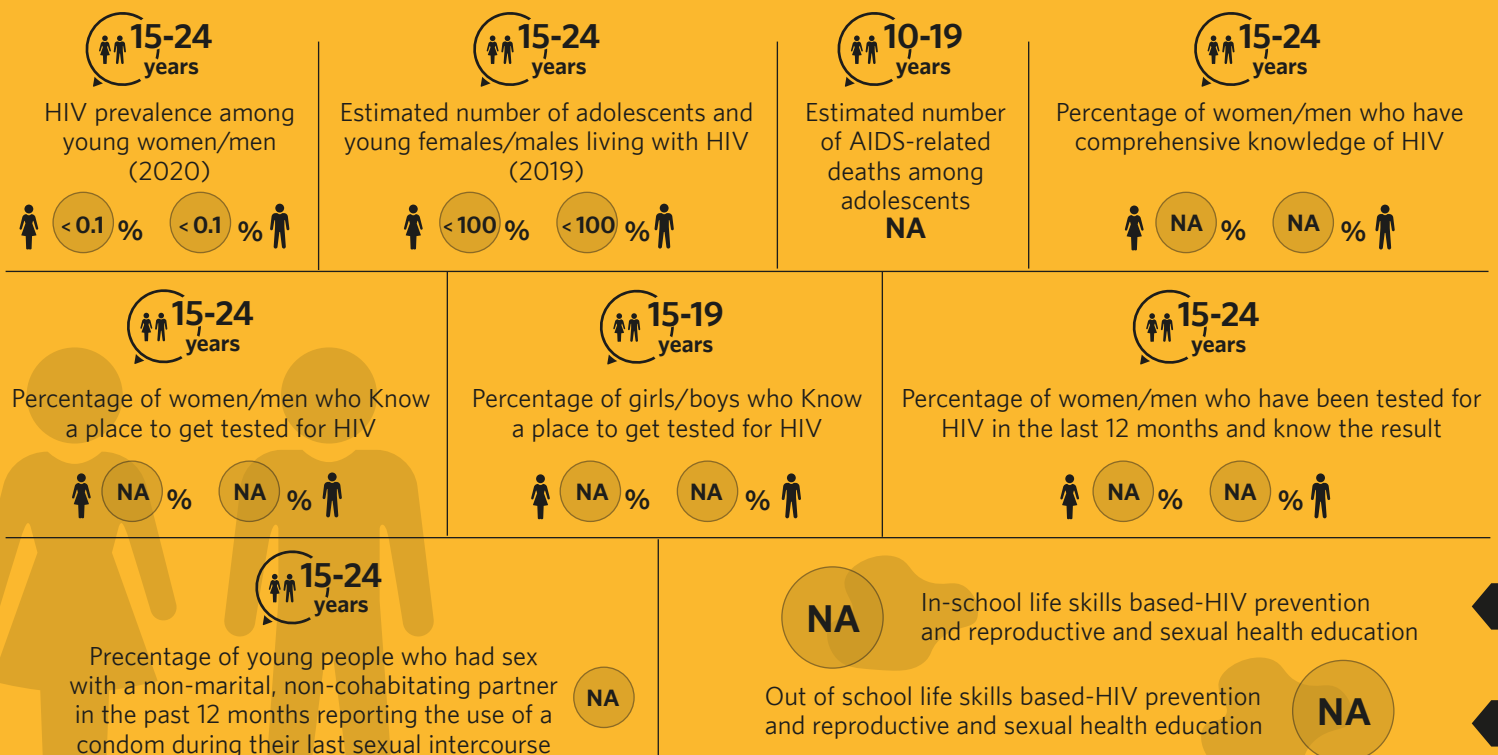
- Total population (millions) (2019) **22,145,588**
- Population aged 10-24 (%) **32.3**
- HIV prevalence among people aged 15-49 years (2020) **< 0.1**
- HIV prevalence among people aged 15-24 years (2020) **< 0.1**

The prevalence among the general population (15-49 years, 2019) is less than 0.1%. The epidemic is very low also among key populations, such as female sex workers (FSWs) and their clients, men who have sex with men (MSM) and Persons Injecting Drugs (PIDs). The main modes of transmission are heterosexual relations with low levels of transmission via injecting drugs and homosexual and bisexual relations. Data on adolescents and young people is either inexistent/scarce or inaccessible and outdated if existent. Education policies guiding delivery of Life Skills based HIV and sexuality education, according to international standards, exist in primary, secondary school and teacher training. Laws requiring parental consent for adolescents younger than 16 years to access Sexual Reproductive Health, HIV testing and HIV treatment. Young people participate in policy/guidelines/strategy development related to their health in technical teams for development/review/update of national AIDS strategies and plans; for access to HIV testing, treatment, care and support services; National AIDS Coordinating Authority or equivalent, with a broad-based multi-sector mandate, Global Fund Country Coordinating Mechanism.



## Demographics/ population data

## Adolescents and young people, HIV/AIDS (knowledge, testing, treatment)



## Discrimination

### 15-19 years

Percentage of women/men who report discriminatory attitudes towards people living with HIV

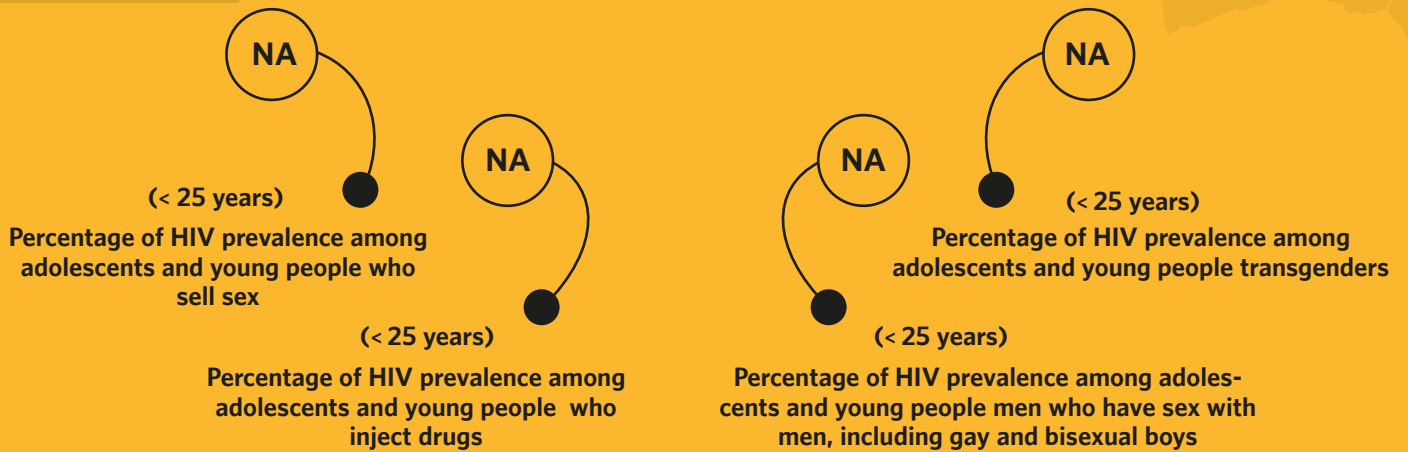


### 20-24 years

Percentage of women/men who report discriminatory attitudes towards people living with HIV



## Key population



## Fertility, family planning (FP), sexual and reproductive health (SRH)

**NA**

Currently married adolescent girls, aged 15-19 years, who use any modern contraceptive methods

**NA**

Births among adolescent mothers, aged 15-19 years, attended by skilled health personnel (typically a doctor, nurse or midwife)

**NA**

Women, age 20-24 years, who have had a live birth before age 18

**38 %**

Adolescent fertility rate (births per 1,000 women aged 15-19 years) (2018)

## Physical & sexual violence

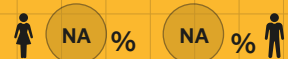
Percentage of ever-partnered girls, aged 15-19 years, who have experienced physical and/or sexual violence by a current or former intimate partner during the last 12 months



Among girls, aged 15-19 years, who ever experienced forced sex, the percentage who sought help from professional sources



Percentage of adolescent girls/boys, aged 15-19 years, who justify wife beating for any of the following reasons: she goes out without telling him; she neglects the children; she argues with him; she refuses sex with him; she burns the food



Percentage of young people, aged 20-24 years, who justify wife beating for any of the following reasons: she goes out without telling him; she neglects the children; she argues with him; she refuses sex with him; she burns the food

